

Imperial measures

1 Sort the measures into the table.

The first one has been done for you.

gram	pound	ounce	foot
kilogram	centimetre	inch	stone
gallon	millilitre	litre	kilometre

	Metric	Imperial
Mass	gram	
Capacity		
Length		

2 Fill in the missing numbers.

a) 1 foot is equal to inches.

1 inch is approximately centimetres.

b) 1 pound is equal to ounces.

1 stone is equal to pounds.

c) 1 gallon is equal to pints.

3 Complete the conversions.

a) 1 foot = inches

2 feet = inches

10 feet = inches

20 feet = inches

15 feet = inches

b) 1 gallon = pints

gallons = 40 pints

gallons = 48 pints

gallons = 960 pints

gallons = 2,000 pints

4 Here are some conversion facts for stones, pounds and ounces.

1 pound = 16 ounces

1 stone = 14 pounds

Given these facts, how many ounces are there in 1 stone?

5 The world's tallest man was 8 feet and 11 inches tall.

a) What was his height in inches?

inches

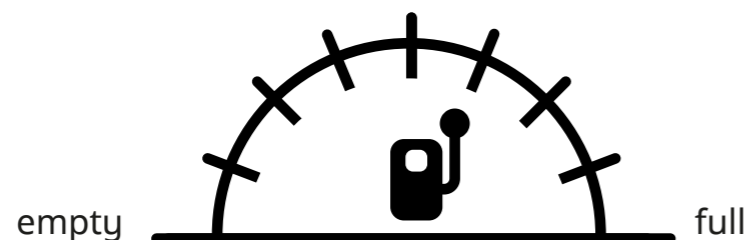
b) Approximately how tall was he in centimetres?

cm

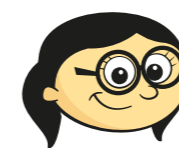
6 Mr White's car has a fuel tank that can hold 16 gallons of petrol.

a) His tank is a quarter full.

Draw an arrow to show how much petrol is in his tank.



b)



Mr White needs another 96 pints of petrol to fill his tank.

Is Annie correct? _____

Show workings to support your answer.

7 In each pair, tick the measurement that is greater.

Show workings to support your answer.

a)

14 pounds

96 ounces

b)

6 feet 5 inches

240 cm

c)

26 gallons

200 pints