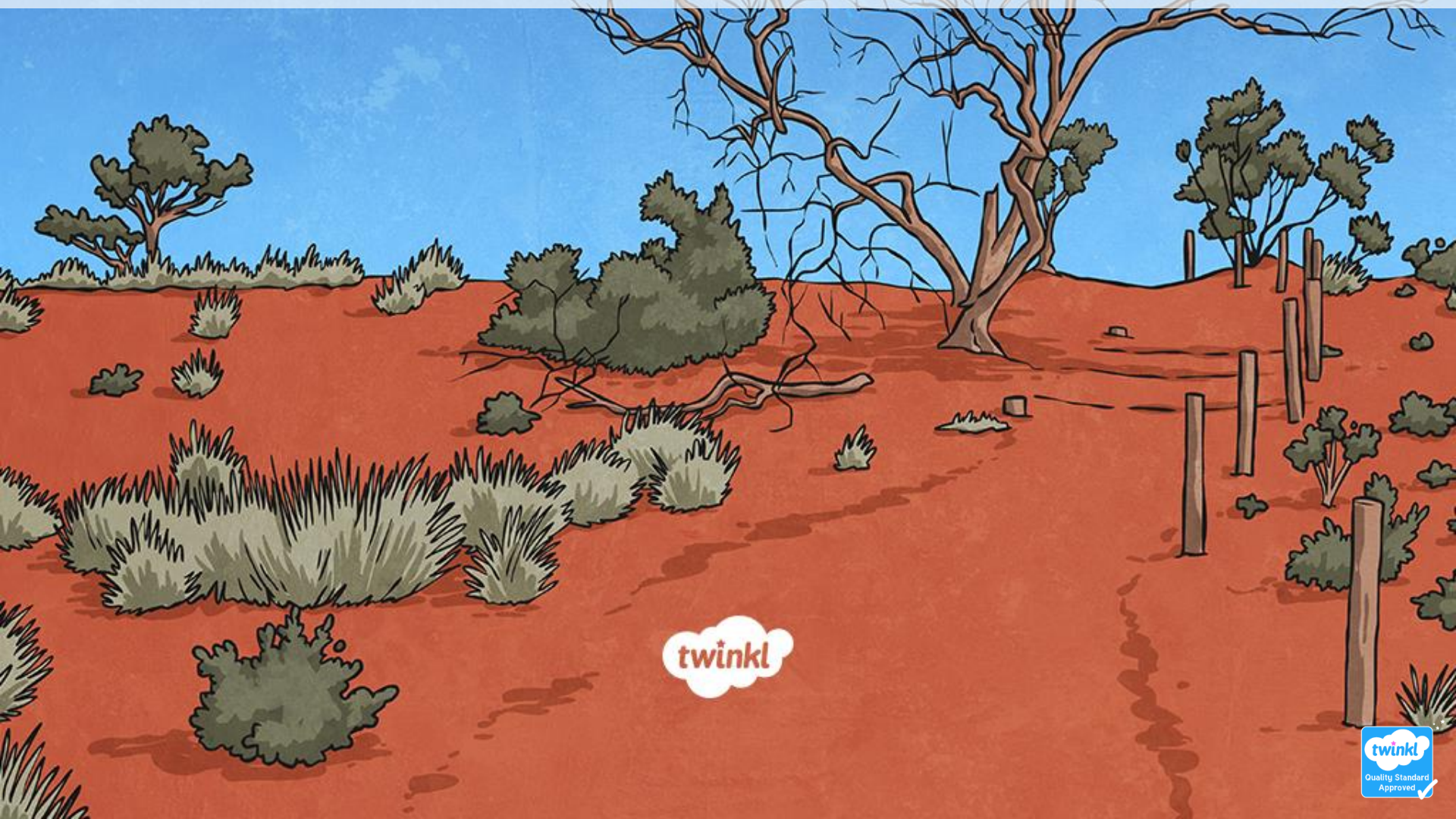


Speech Marks



twinkl

Speech Marks



Introductory Activity

Independent Focused Activity

Review Activity

Consolidation Activity

Assessment

Thursday 21st September

WALT use and correctly punctuate direct speech.

Success Criteria

- I can identify direct speech.
- I can explain where speech marks belong in different types of sentences.
- I can place other punctuation inside the speech marks.
- I can put each different speaker on a new line.
- I can explain that the break between speech and non-spoken words is normally signalled by a comma.

Introductory Activity



The Button



- Read **The Button** story.
- Work with a partner to identify and highlight the speech marks in the text.



The Button

I can use and correctly punctuate direct speech.

1. Read through the story.
Work with a partner to identify and highlight the speech marks in the text.

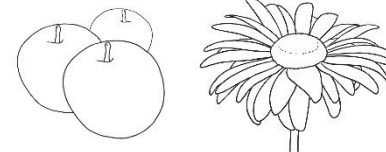


WHAM-BAM-JELLY-AND-JAM!

Within a minuscule of a second of the button being pressed the world had turned into chocolate! At first this seemed like a gift from God for Mr Bonkers. He shouted, "Hallelujah!" Staring down in sheer amazement, he saw that a rather dull apple he had been eating had now turned into a rich, dark, large, scrummy Belgium chocolate! Without another thought for his already bulging waistline, he greedily gobbled it down.

"Wow, this is like heaven," exclaimed Mrs Bloom in delirious delight as she tasted an orange chocolate flower!

Mrs Floss was not as keen, "Your teeth will fall out!" she yelled at her two young children, Pippin and Zak, as they licked the trees, the pavement and everything in sight.



planit

Language Conventions | Year 4 | Speech Marks

The Button



How do we know where the speech marks belong?

What else do we know about speech marks?

WHAM-BAM-JELLY-AND-JAM! Within a minuscule of a second of the button being pressed the world had turned into chocolate! At first this seemed like a gift from God for Mr Bonkers. He shouted, "Hallelujah!" Staring down in sheer amazement, he saw that a rather dull apple he had been eating had now turned into a rich, dark, large, scrummy Belgium chocolate! Without another thought for his already bulging waistline, he greedily gobbled it down. "Wow, this is like heaven," exclaimed Mrs Bloom in delirious delight as she tasted an orange chocolate flower! Mrs Floss was not as keen, "Your teeth will fall out!" she yelled at her two young children, Pippin and Zak, as they licked the trees, the pavement and everything in sight.

All spoken words are enclosed in speech marks.

All non-spoken words are outside the speech marks.

Only punctuation that is part of the direct speech should go inside speech marks.

If the end of the direct speech falls at the end of the sentence, only one punctuation mark is needed.

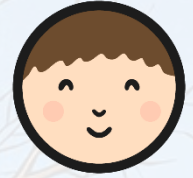
The break between speech and non-spoken words is normally signalled by a comma.

Put each different speaker on a new line.

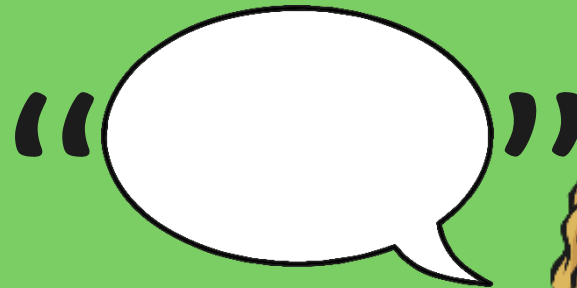
Independent Focused Activity



Speech Bubbles



“Wow, this is like heaven,”
exclaimed Mrs Bloom in delirious
delight as she tasted an orange
chocolate flower!



Mrs Floss was not as keen, “Your
teeth will fall out!” she yelled at
her two young children, Pippin and
Zak, as they licked the trees, the
pavement and everything in sight.

Mrs Bloom



Mrs Floss

Remember:

The shape of the speech bubble
helps us to remember which way
round to do the speech marks.

The words and punctuation
enclosed in the speech marks goes
into the speech bubble.

Speech Bubbles



Complete the **Speech Bubbles Activity Sheet**.



Speech Bubbles/Writing a Story

I can use and correctly punctuate direct speech.



1. Look at the pictures of the two children from the story, Pippin and Zak.
Add into the speech bubbles what you think they might say to their Mum, Mrs Floss.
Remember you don't need to add speech marks into speech bubbles.



Zak

2. Write the text in the speech bubbles as lines in the story.
Don't forget to include the correct punctuation and a new line for a new speaker.



Pippin

Review Activity



Writing a Story

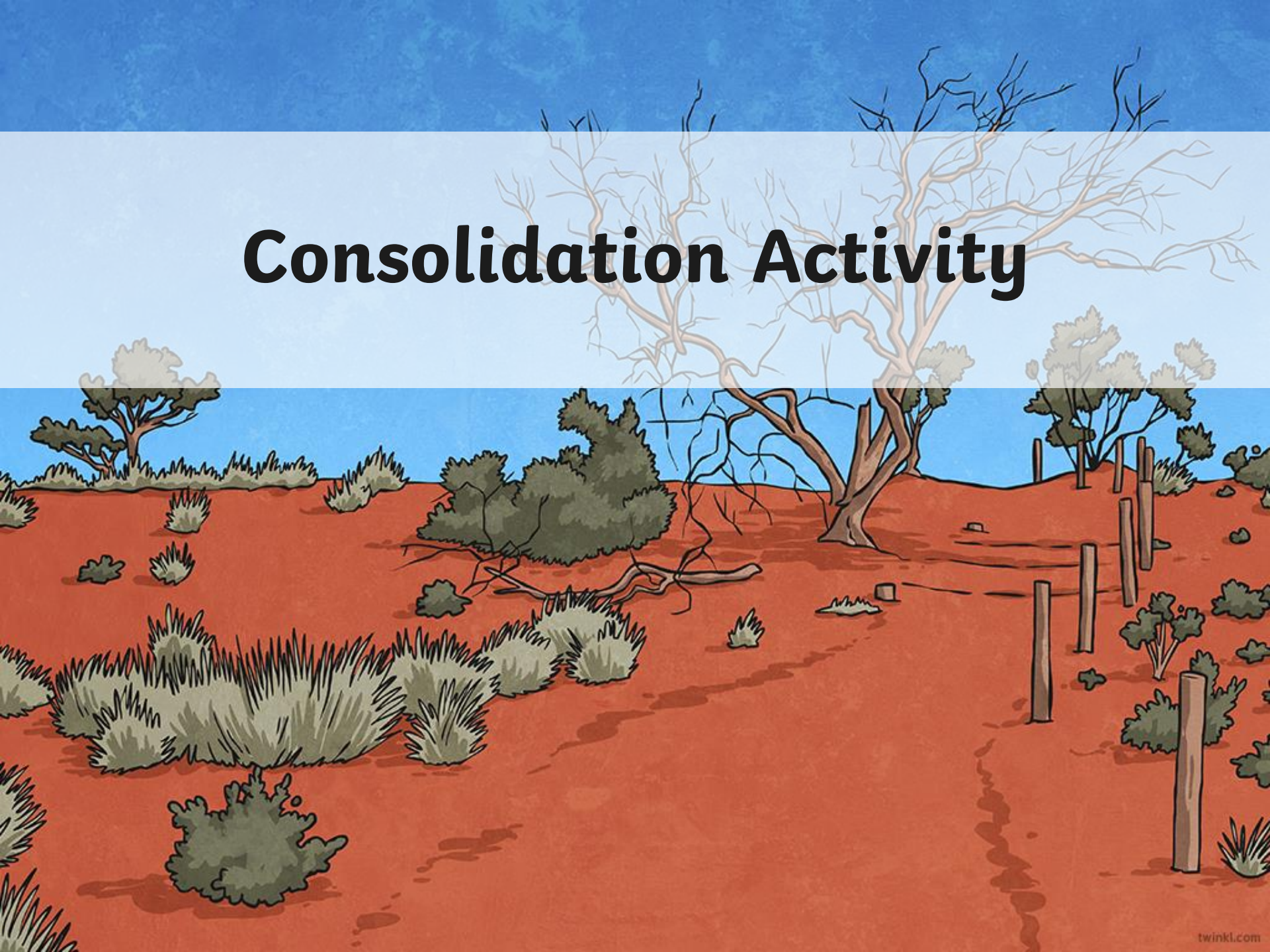


“
When we change the
speech bubbles into
lines in the story:
”



- All spoken words are enclosed in speech marks;
- All non-spoken words are outside the speech marks;
- Only punctuation that is part of the direct speech should go in speech marks;
- If the end of the direct speech falls at the end of the sentence, only one punctuation mark is needed;
- Always use a comma after the speech verb if it comes before direct speech;
- If the speech verb comes **before** direct speech then start the direct speech with a capital letter;
- Put each different speaker on a new line.

Consolidation Activity



Mixing It Up



The reporting clause can be placed at the beginning, in the middle or at the end of a sentence.

“Wow, this is like heaven!” exclaimed Mrs Bloom.

Mrs Bloom exclaimed, “Wow, this is like heaven!”

Comma after speech verb

When a sentence using direct speech is split by a speech verb (said, shouted etc.) there should be one comma inside the speech marks at the end of the first part of direct speech and a comma outside the speech marks, after the speech verb.

“Wow,” exclaimed Mrs Bloom, “this is like heaven!”

1st comma
inside the
speech marks.

2nd comma before the
speech marks and
after the speech verb.

Lower case letter.

Mixing It Up



Complete the **Mixing It Up Activity Sheet** to help you practise using speech marks.

Mixing It Up

I can use and correctly punctuate direct speech.
Direct speech can be placed at the beginning or at the end of a sentence.

1. Put the missing speech marks in each sentence.
Then write each sentence in two different ways.
The first is done for you.


a) The girl said, "This tastes delicious."
b) *"This tastes delicious," the girl said.*
c) *"This tastes," the girl said, "delicious."*

d) I can eat more, much more, the boy boasted.
e) _____
f) _____

g) The crossing patrol woman explained, My lollipop stick is melting, and quickly.
h) _____
i) _____

j) Stop eating immediately! shouted Cara.
k) _____
l) _____

m) Do you know what? I feel very sick! Pippin wailed.
n) _____
o) _____

  Language Conventions | Year 4 | Speech Marks

Mixing It Up

I can use and correctly punctuate direct speech.
Direct speech can be placed at the beginning or at the end of a sentence.

1. Put the missing speech marks in each sentence.
Then write each sentence with the reporting clause at the end.
The first is done for you.



a) The girl said, "This tastes delicious."
b) *"This tastes delicious," the girl said.*

c) The boy boasted, I can eat more than you.
d) _____

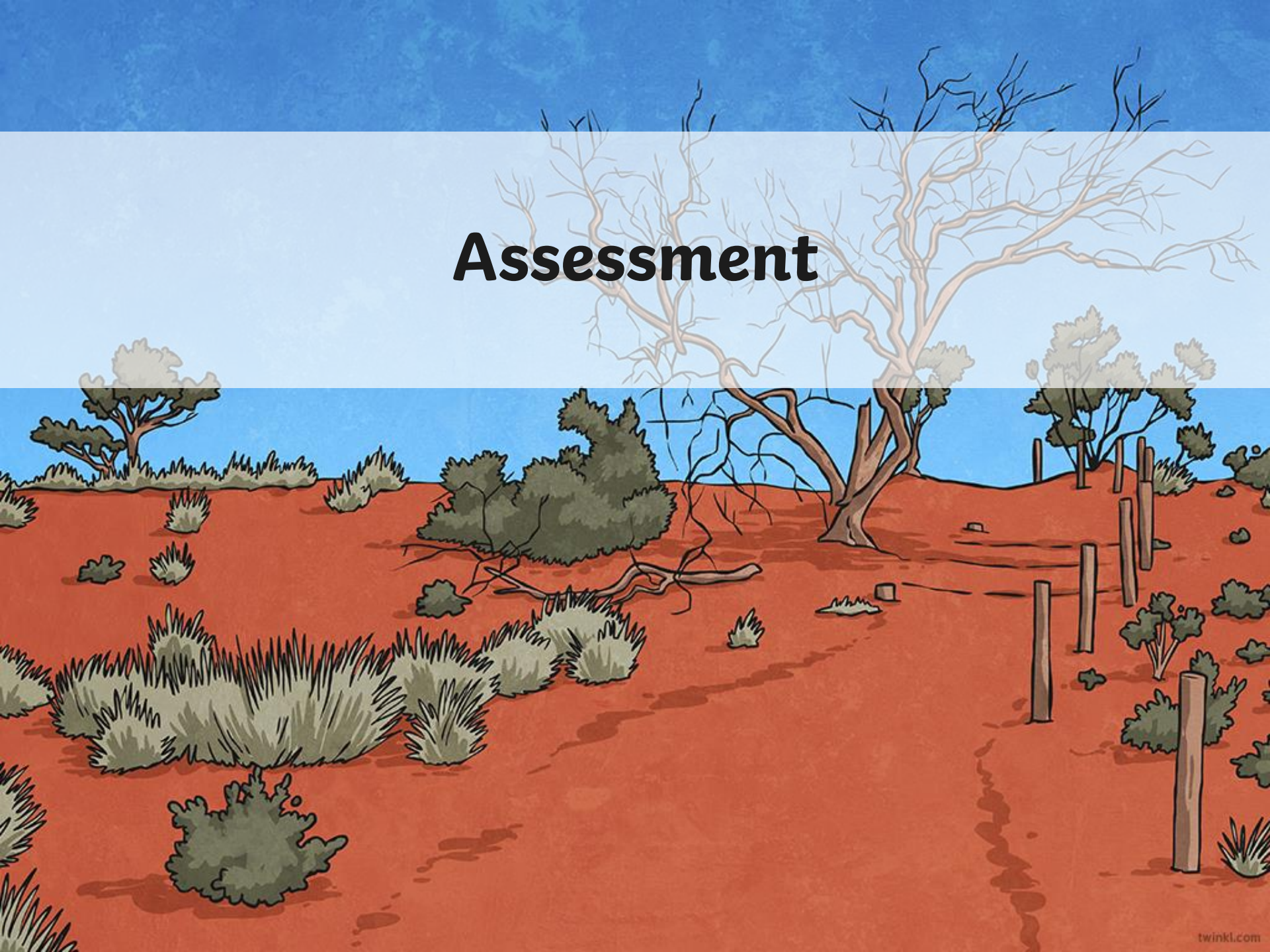
e) The crossing patrol woman explained, My lollipop stick is melting, I'm afraid.
f) _____

g) Cara shouted Stop eating!
h) _____

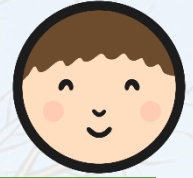
i) Pippin wailed, I feel sick!
j) _____

  Language Conventions | Year 4 | Speech Marks

Assessment



Mini Test



Use all of the information you have learnt and practised about speech marks.

Work on your own to complete the **speech marks Mini Test**.



Name: _____ Date: _____



Speech Marks Mini Test

1. Which **punctuation mark** is missing from the sentence? Tick the correct box.

"Can I have more chocolate now?" Molly asked.

.	,	!	?
<input type="checkbox"/>	<input type="checkbox"/>	<input type="checkbox"/>	<input type="checkbox"/>

2. Put the missing **speech marks** in each sentence.

- The girl said, I'm very tired of eating all this chocolate.
- I'm very tired of eating all this chocolate, the girl said.
- I'm very tired, the girl said, of eating all this chocolate.

3. Re-write the text in the speech bubbles as lines in a story using **direct speech**.



Mr Bonkers

Mrs Floss

Zak

Aim

- I can use and correctly punctuate direct speech.

Success Criteria

- I can identify direct speech.
- I can explain where speech marks belong in different types of sentences.
- I can place other punctuation inside the speech marks.
- I can put each different speaker on a new line.
- I can explain that the break between speech and non-spoken words is normally signalled by a comma.



twinkl